

# Stop Spending So Much Time Selecting Components



## Designing with Altium

### Industry Fact:

A survey of engineers revealed that 89% said they are more concerned with cost issues than ever before and 74% said their company pressured them to do more with fewer resources. (UBM Tech "Mind of the Engineer" Study)

### Industry Objective:

More and more now, engineers are tasked with the responsibilities of the PCB designer. Our recent survey shows that only 14% of our users have a "PCB Design" title. Likewise, engineers and PCB designers alike are now being asked to make supply chain decisions during the design phase, a job previously handled by a purchasing specialist. Coupled with shorter design cycles and more robust features, designers and engineers are being asked to design more sophisticated products, assume more roles in the process, and meet ever-accelerating release targets.



**Component specification errors that result in ECOs after the product is released can cost more than 5-times what it costs to correct during development.**

### How this Affects You:

Time spent on component management takes time from product design. Component searches and search tools take a lot of time and even then, the results can be inconsistent. Once you have selected components, are you able to determine which suppliers have the best cost and lead times? Perhaps there are alternative parts that have better cost, but are you able to find them? You may even have some of the components in inventory...if you can find them easily on previous BOMs.

Once you've selected the components, more time is required to build the component and validate it. Finally, the product reaches manufacturing! But now you have to manage the potentially even more time-consuming tasks of managing components as changes occur throughout the product life cycle. And, as your company grows, these problems compound.

### If:

You have run into any of the problems just listed — finding availability, finding the best cost, finding alternatives, checking your own library for previously used parts...

### Then:

You will benefit from a tool that allows real-time parts search, scouring multiple suppliers, a tool that provides an interactive BOM that shows you instant parts cost and stock, a tool that makes footprint creation and validation quick and reliable.

What you really need is a tool that will make all aspects of component selection, specification, and management faster, easier, and more reliable.



### What if You Could...

- Search components from hundreds of suppliers simultaneously, using parametric data
- Compare similar components to identify valid alternatives and substitutes
- Use one tool to view and manage all component information — including availability and cost — in near-real time
- Quickly find “where used” in all of your existing designs and projects
- Use real-time data to manage changes throughout the component lifecycle
- Pull-up an interactive BOM containing real-time component stock, lead time, and cost data

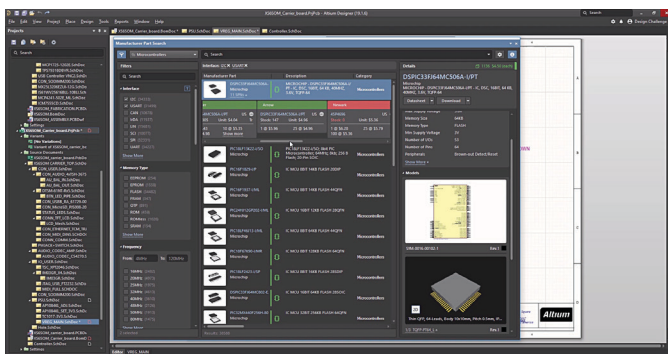
### What You Can Do:

Combat these problems across the entire component management and selection process. One Unified tool can incorporate all these problem-solving features directly in your design environment and present to you in a “designers context”, allowing you to concentrate more on design and less on component management.

### What it is:

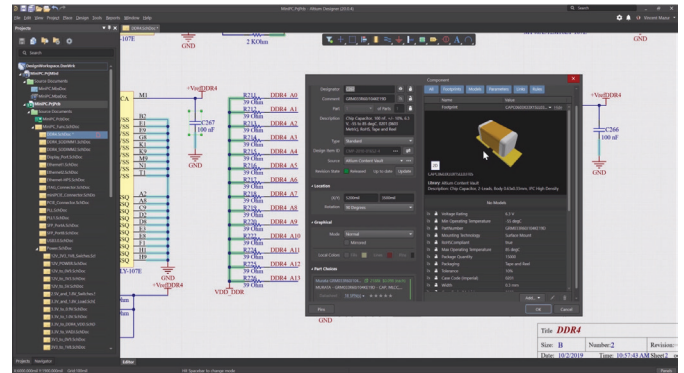
Altium’s Concord Pro delivers these valuable real-time features to a tool that integrates directly into the Altium Unified Design Environment — no third party component data tools. Concord Pro lets Altium Designer users more effectively and easily manage component libraries.

With Concord Pro, you can do parametric searches from your desktop without accessing multiple tools or third-party applications. You can easily compare components — with differences highlighted. And, it’s smart: it knows that a “1000” ohm resistor is the same as a “1k” ohm resistor. To erase inconsistencies, intelligent component templates ensure complete data is entered for that component.



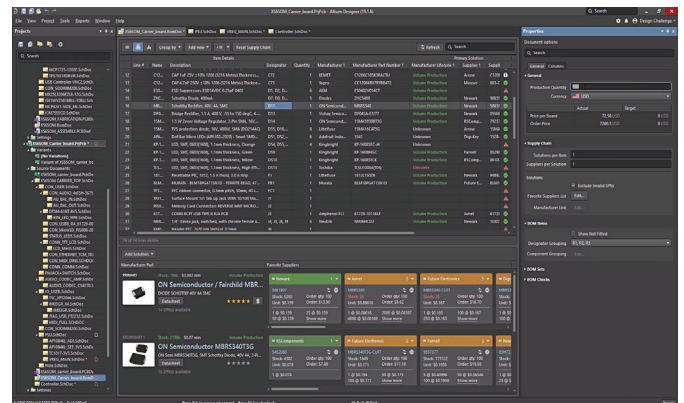
Screen cap Parts Search

Within one unified editor, all component data can be entered for all personnel that need it: engineer, PCB designer, buyer. Component data can be found and downloaded from Octopart, providing real-time data. Validation checks ensure that part numbers, revisions, pin errors, and footprints are correct and current.



Screen cap Part Data

The “where used” tool lets you find compatible parts that have been used in previous designs, saving time and potentially allowing more cost-effective purchasing. It also allows you to easily locate what products may be affected by component life cycle or availability issues. With ActiveBOM, included with Concord Pro, you can rank alternatives by production level, with the component stock, lead time, and cost all displayed, as well as notes and warnings about low stock or end-of-life notices.



Screen cap ActiveBOM